

MONTHLY MEMBERSHIP PROGRESS REPORT

District 351

Results as of: 6/30/2020

GMT:

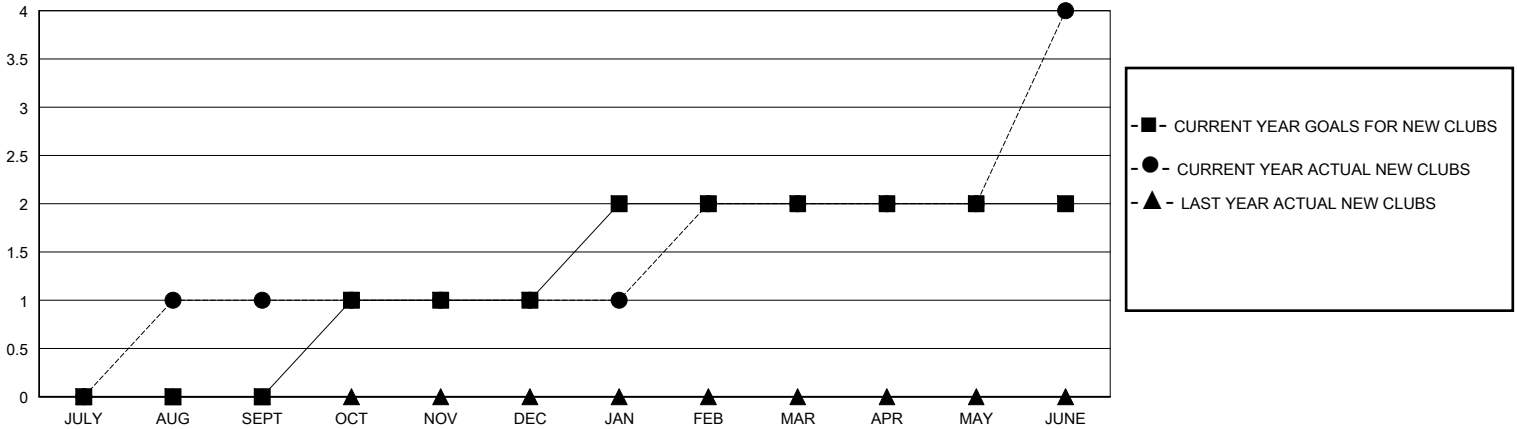
LOCATION LEBANON

GMT CA

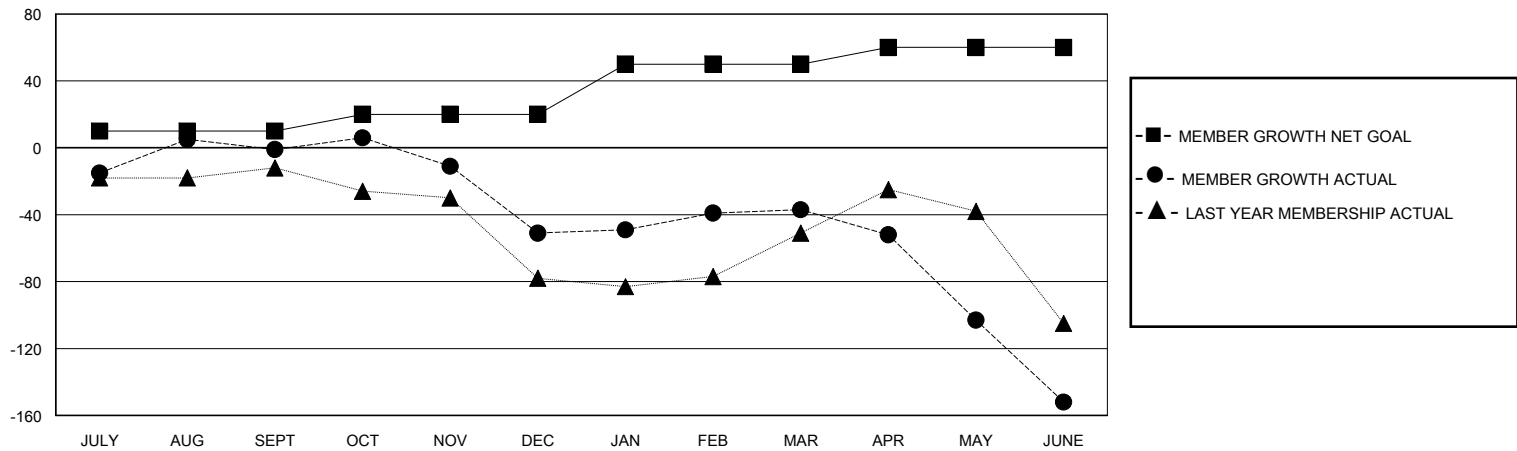
Clubs			
RESULTS FOR 2019-2020			
QUARTER	NEW CLUB GOAL	NEW CLUBS	DROPPED CLUBS
JULY/AUG/SEPT	0	1	1
OCT/NOV/DEC	1	0	0
JAN/FEB/MAR	1	1	1
APR/MAY/JUNE	0	2	3

Members			
RESULTS FOR 2019-2020			
QUARTER	MEMBER GROWTH NET GOAL	MEMBER GROWTH ACTUAL	DROPPED MEMBERS ACTUAL (including transfers)
JULY/AUG/SEPT	10	85	76
OCT/NOV/DEC	10	49	86
JAN/FEB/MAR	30	90	70
APR/MAY/JUNE	10	81	201

GOALS AND ACTUAL NEW CLUBS CUMULATIVE



GOALS AND ACTUAL MEMBERS CUMULATIVE



DROPPED CLUBS: 4	46 CLUBS OF 116 ADDED 1 OR MORE NEW MEMBERS	GENDER DISTRIBUTION	
		MALE 1,217 (54.84%)	FEMALE 1,002 (45.16%)
DROPPED MEMBERS		CLICK HERE FOR CUMULATIVE MEMBERSHIP DATA	TOTAL FAMILY UNIT MEMBERS 622
DECEASED 7	CLUB CANCELLED 0		FAMILY MEMBERS PAYING HALF DUES 351
OTHER 411	TOTAL 418		